



2023 VENDOR DIRECTORY



**AUDIT
SOLUTIONS**

**COMPLIANCE
SOLUTIONS**

**MANAGEMENT CONSULTING
SOLUTIONS**

We are THE largest Credit Union audit and compliance firm in the Southeast, currently serving 220+ Credit Unions and are the 12th ranked auditing firm in the nation.

www.cuacg.com

Why CUACG?

The reasons are endless, but here are the top **5** to start!

- 1. Exclusive to Credit Unions** - We KNOW this industry!
- 2. Efficient** - Have the final copy of your report within one week of fieldwork.
- 3. Flexible** - Capability of completing any audit within weeks of signed contract.
- 4. Diversity in Education** - Different auditors with different areas of expertise.
- 5. Responsive** - Email any question to questions@cuacg.com.

PLUS! We're owned by the League of Southeastern Credit Unions which grants us access to additional industry insight and resources unmatched by other firms.

**Ready for a FREE quote?
Visit CUACG.com or contact Marcus King
at Marcus.king@cuacg.com or 662.322.1038.**

PRODUCT CATEGORIES

ATM MANAGED SERVICES

Members ATM Alliance13

AUDIT & CONSULTING

Absolute Financial Services, Inc.4
 Allied Solutions4
 Cash Transactions, LLC4
 CU Audit & Compliance Group8
 CU*Answers8
 Doeren Mayhew9
 Nearman, Maynard, Vallez, CPAs13
 Tru Treasury20
 Volunteer Corporate Credit Union20

AUTOMOBILE SOLUTIONS

Allied Solutions4
 DDI Technology9
 PAR North America16
 Unitas Financial Services20

COLLECTIONS

Allied Solutions4
 Corporate One Federal Credit Union5
 CU*Answers8
 CU*SOUTH8
 Dunn Law, P.A.9
 Kudulis Reisinger and Price, LLC12
 REPAY17
 Shared Services for Credit Unions17

COMPLIANCE & RISK MANAGEMENT

Absolute Financial Services, Inc.4
 Allied Solutions4
 Cash Transactions, LLC4
 CRF Advisors, Inc.5
 CRS Data5
 CU Audit & Compliance Group8
 CUNA Mutual Group8
 Doeren Mayhew9
 Kudulis Reisinger and Price, LLC12
 PIVOT Group LLC16
 QSI16
 Tru Treasury20
 Volunteer Corporate Credit Union20
 Vyfi, LLC20

CORE PROCESSING SERVICES

CU*SOUTH8
 Members Core Alliance13

CYBERSECURITY

CUNA Mutual Group8
 Doeren Mayhew9
 PIVOT Group LLC16

DATA PROCESSING

Allied Solutions4
 Aurora Advantage Powered by CSPI4
 CU*Answers8
 CU*SOUTH8
 Members Core Alliance13
 Sage Direct, Inc.17

EFT SERVICES

Allied Solutions4
 Cash Transactions, LLC4
 Deluxe8
 DDI Technology9
 Magic-Wrighter, Inc.13
 Volunteer Corporate Credit Union20

FACILITY DESIGN

Absolute Financial Services, Inc.4
 Cash Transactions, LLC4
 Design Build Solutions, Inc.9
 The Redmond Company16

FINANCIAL SERVICES

Absolute Financial Services, Inc.4
 Allied Solutions4
 Aurora Advantage Powered by CSPI4
 Cash Transactions, LLC4
 Corporate America Credit Union4
 Corporate One Federal Credit Union5
 CUNA Mutual Group8
 Deluxe8
 Doeren Mayhew9
 Gallagher Executive Benefits Solutions12
 LEVERAGE Payment Solutions12
 Neural Payments13
 Shared Cooperative Services, LLC17
 Shared Services for Credit Unions17
 Stifel17
 Tru Treasury20
 Unitas Financial Services20
 Visa20
 Volunteer Corporate Credit Union20

HUMAN RESOURCES

Allied Solutions4
 Deluxe8
 Gallagher Executive Benefits12
 LEVERAGE Benefits Group12

INFORMATION TECHNOLOGY

Dynamic Quest9

INSURANCE

Allied Solutions4
 CUNA Mutual Group8
 LEVERAGE Benefits Group12

LEGAL SERVICES

Dunn Law, P.A.9
 Kudulis Reisinger and Price, LLC12
 Sorenson Van Leuven17

LENDING SERVICES

Allied Solutions4
 Corporate One Federal Credit Union5
 Credit Union Loan Source5
 Crescent Mortgage5
 CUAC5
 CUNA Mutual Group8
 Doeren Mayhew9
 LendKey12
 MBFS13
 REPAY17
 Unitas Financial Services20
 Volunteer Corporate Credit Union20

MARKETING

Allied Solutions4
 Cash Transactions, LLC4
 Deluxe8
 EverView9
 Growth by Design12
 HC312
 Print Resources, Inc.16
 QSI16
 Sage Direct, Inc.17

MEMBER SERVICE SOLUTIONS

Absolute Financial Services, Inc.4
 Allied Solutions4
 Aurora Advantage Powered by CSPI4
 Cash Transactions, LLC4
 Corporate America Credit Union4
 Corporate One Federal Credit Union5
 CU*Answers8
 CU*SOUTH8
 Deluxe8

Econocheck9
 EverView9
 HC312
 LEVERAGE Rewards13
 QSI16
 REPAY17
 Shared Cooperative Services, LLC17
 Shared Services for Credit Unions17

Volunteer Corporate Credit Union20

MORTGAGE SERVICES

Allied Solutions4
 Aurora Advantage Powered by CSPI4
 Common Bond Title, LLC4
 Credit Union Financial Services, LLC5
 CRS Data5
 Unitas Financial Services20

NETWORK SECURITY SERVICES

Absolute Financial Services, Inc.4
 Cash Transactions, LLC4
 Doeren Mayhew9
 QSI16

OPERATIONAL SOLUTIONS

Absolute Financial Services, Inc.4
 Allied Solutions4
 Aurora Advantage Powered by CSPI4
 Cash Transactions, LLC4
 Corporate America Credit Union4
 Corporate One Federal Credit Union5
 CU*Answers8
 CU*SOUTH8
 CUVM8
 Deluxe8
 HC312
 LEVERAGE Payment Solutions12
 Members ATM Alliance13
 NextBranch16
 ODP Business Solutions16
 QSI16
 The Redmond Company16
 Sage Direct, Inc.17
 Shared Cooperative Services, LLC17
 Shared Services for Credit Unions17
 Unitas Financial Services20
 Visa20
 Volunteer Corporate Credit Union20

Welcome to LSCU's Vendor Directory – a valuable resource to assist credit union executives in identifying, locating and sourcing credit union suppliers and their products and services.

Each product category identifies a list of suppliers. To obtain a specific company's contact information, including website, turn to the **VENDOR DIRECTORY** on pages 4-17.

Please note: *LEVERAGE* Preferred Partners can be easily identified by the Preferred Partner logo next to each of their listings.

For more on how to become a Preferred Partner visit, www.myleverage.com/partnership-opp.php.



ABSOLUTE FINANCIAL SERVICES, INC.

Carl Schriber
2251 Destiny Way, Unit 2
Odessa, FL 33556
Phone: 727-753-0233
carl@afsiatms.com
www.afsiatms.com

Experience, Quality and Value with Every ATM, together these qualities have formed the foundation that have made Absolute Financial Services a national leader in the ATM industry since 1994. Absolute Financial Services is a full-service provider of banking equipment, specializing in fully refurbished and new ATMs, ITMs and TCRs. We provide your financial institution with complete solutions for all of your ATM projects from recommending the appropriate unit, providing the hardware, delivery, coordinating the installation, set-up and bring live, to on-going 1st and 2nd line maintenance. Your satisfaction is our highest priority.



ALLIED SOLUTIONS, LLC

Mark Rodriguez
6111 Broken Sound Parkway NW,
Suite 120
Boca Raton, FL 33487
Phone: 800-264-2364
mark.rodriguez@alliedsolutions.net
www.alliedsolutions.net

Allied Solutions is one of the largest providers of insurance, lending, risk management, and data-driven solutions to financial institutions in the US. Allied Solutions uses technology-based solutions customized to meet the needs of 4,000 banks and credit unions, along with a portfolio of innovative products and services from a wide variety of providers. Allied Solutions is headquartered in Carmel, Indiana and maintains several offices strategically located across the country. Allied Solutions is a wholly owned and independently operated subsidiary of Securian Financial Group.



AURORA ADVANTAGE POWERED BY CSPI

Mike Bass
805 W Stadium Blvd
Jefferson City, MO 65251
Phone: 317-600-7028
mbass@cspiinc.com
www.auroradigitalbanking.com

Aurora Advantage focuses on the needs of today's progressive credit unions to meet growing demands of account holders by providing Next Gen core solutions, digital banking suite, online lending & account opening, and document management. We support an open banking architecture for small and mid-sized credit unions.



CASH TRANSACTIONS, LLC

Nick Schuster
3286 Humphries Hill Rd
Austell, GA 30106
Phone: 800-262-7995
nick.schuster@cashtrans.com
www.cashtrans.com

For over 25 years, CashTrans has served over 1,600 community financial institutions across the Southeast including Georgia, Florida, Alabama, and South Carolina. Our industry-leading products include HYOSUNG, NCR, and other high-quality ATM and teller video solutions (ITMs). CashTrans is an industry leader in ATM fleet managed services, turn-key equipment outsourced programs, equipment service and maintenance, deposit automation, teller cash recyclers, branch equipment, safes, security systems, VAT systems, instant card issuance, mobile and digital banking solutions, and much more. Our clients deserve and expect only the best and we commit that CashTrans will earn your business every day!

COMMON BOND TITLE, LLC



Lynn Hightower-Moore
300 Office Park Drive, Ste 230
Mountain Brook, AL 35223
Phone: 205-421-1010
Lynn@CommonBondTitle.com
www.CommonBondTitle.com

Common Bond Title partners with credit unions to support their mortgage staff through the closing process and help members; with their first homes, refinance, to send children to college, and buy their dream homes. We prepare the Loan Estimates, Closing Disclosures, closing packages, order documents, search titles, close loans, and retrieve recordings/final policies.



CORPORATE AMERICA CREDIT UNION

Ashley Daniels
4365 Crescent Road
Ironton, AL 35210
Phone: 205-313-4300
adaniels@corpam.org
www.corpam.org

"Different Starts Here" is our motto - but what exactly does that mean? It means we think differently, act differently and treat our members differently with a common goal - to truly add value to your organization. CACU is a dedicated, not-for-profit financial cooperative governed by a board of directors elected from and by our member-owner credit unions. With nearly 500 credit unions across the nation, we boast a comprehensive list of products and services including investments, liquidity solutions, and correspondent services such as ACH, item processing, and remote deposit capture.



CORPORATE ONE FEDERAL CREDIT UNION

Christine Mayes
8700 Orion Place
Columbus, OH 43240
Phone: 866-692-6771
cmayes@corporateone.coop
www.corporateone.coop

Serving more than 700 credit unions nationwide, Corporate One Federal Credit Union has been providing premier investment, funding, and payment solutions for America's credit unions for nearly 75 years. In addition to helping member credit unions grow their bottom line, manage cash effectively, and succeed in the instant payments arena, Corporate One continues to nurture and grow its wholly owned CUSOs: Accolade Asset/Liability Advisory Services (balance sheet management) and Lucro Commercial Solutions (business lending).

CREDIT UNION FINANCIAL SERVICES, LLC

Karen Frazee
3692 Coolidge Court
Tallahassee, FL 32311
Phone: 850-558-1112
karen.frazee@myleverage.com
www.myleverage.com



Established in 1993, CUFS is a full-service mortgage lending CUSO that focuses on small to medium sized credit unions. We provide customized options to originate, process, underwrite, close, and service mortgages. Simply select the services you need to complete your portfolio and let us do the rest!
NMLS ID# 645585



CREDIT UNION LOAN SOURCE

Karen Frazee
3692 Coolidge Court
Tallahassee, FL 32311
Phone: 850-558-1112
karen.frazee@myleverage.com
www.myleverage.com

Credit Union Loan Source (CULS) is a CUSO founded in Atlanta in 2004. Our main mission continues to be providing credit unions with a low-risk/high-yield investment opportunity via our unique loan participation program. Our monthly flow program acts as a subscription and has provided over \$12 billion in assets to over 160 credit unions in ten states. CULS also provides Loan Servicing and Loan Origination services for credit unions.



CRESCENT MORTGAGE

Cammie Aucoin
6600 Peachtree Dunwoody Rd NE
Atlanta, GA 30328
Phone: 813-610-3175
caucoin@crescentmortgage.net
www.CrescentMortgage.com

Founded in 1993, Crescent Mortgage is a premier provider of secondary mortgage offerings for Credit Unions. We fully understand the level of service you MUST provide your members. We offer a full line of conventional, government, Jumbo and 1xClose Construction products and provide you with the training to ensure a successful partnership. We aim to Daily Exceed your Expectations! www.CrescentMortgage.com



CRF Advisors, Inc.

CRF ADVISORS

Karen Frazee
3692 Coolidge Court
Tallahassee, FL 32311
Phone: 850-558-1112
karen.frazee@myleverage.com
www.myleverage.com



CRF Advisors is a credit risk management firm that services financial institutions, non-profit organizations, and financial services companies. We focus on assisting clients with the identification of potential credit issues through loan portfolio credit review and portfolio stress testing. Specialties include Implementation of ALLL methodology to ensure compliance with FFIEC Interagency policy, valuation and accounting of impaired loans, TDR's, and other real estate owned. We also provide assistance with the preparation and review of 10-K, 10-Q, financial statements and disclosures for clients in compliance with GAAP and SEC regulation.



CRS DATA

Jason Pruitt
341 Troy Circle
Knoxville, TN 37919
Phone: 770-883-6609
jpruitt@crsdata.com
www.crsdata.com/financial-suite

Tailor made for financial institutions, Financial Suite powered by CRS Data provides complex property facts including public tax records, sale and mortgage histories, interactive GIS and plat maps, warranty deeds, and more. Banks across the country leverage Financial Suite to create compliant in-house property evaluations on any type of real estate, identify the best property comparables, determine estimated market values, prospect for maturing real estate loans, and research market trends. CRS Data is dedicated to curating and verifying the data available through our robust product suites, so you can take action to optimize performance, increase revenue, and gain insights into competitive market activity. Make sound decisions knowing your property data is backed by over 30 years of industry-leading experience and exceptional customer service.

Stifel *Services for Credit Unions*



LEVERAGE

Your Advantage

Karen Frazee

Vice President, Business Development

850.558.1112

karen.frazee@myleverage.com

Focused on your credit unions, so you can focus on your members.



Credit unions under *LEVERAGE* and ODP Business Solutions are committed to offering competitive products with better rates and fees than your members might find at for-profit banks.

- Discounted pricing and quarterly promotions to help reduce expenses
- Real-time user dashboard to provide insight and visibility into branch spend
- Services and solutions to help you meet your sustainability objectives
- Subscription services to help you stay stocked up on what your credit union uses most
- Technology, furniture, cleaning and breakroom solutions, plus office supplies



OFFICE SUPPLIES
Up to 44% off*



COPY PAPER
Up to 24% off*



CLEANING & BREAKROOM
Up to 33% off*



FURNITURE
Up to 20% off*



INK & TONER
Up to 18% off*



TECHNOLOGY
Up to 23% off*

PRINTING OPTIONS

BLACK-AND-WHITE COPIES
Up to 40% off

COLOR COPIES
Up to 25% off

FINISHING SERVICES
Up to 40% off

*Savings based on regular prices

Current customers with ODP Business Solutions

Contact your national program manager to see how *LEVERAGE* can meet and exceed its objectives.

Joe Arias III

National Programs, Buying Groups SMB
512.560.4360
joe.arias@odpbusiness.com

Karen Frazee

Vice President,
Business Development, *LEVERAGE*
850.545.4825
karen.frazee@myleverage.com

Scan this QR code to view the *LEVERAGE* Interactive Guide.



Don't have an account yet? Visit <https://community.officedepot.com/GPOHome?id=54512610>

Valid at odpbusiness.com or by phone at 888.263.3423 and fax at 888.813.7272 only. ODP Business Solutions updates pricing, product, and service assortment on a regular basis as a result of a variety of factors, including, but not limited to, market and competitive forces, and reserves the right to change pricing and product assortment at any time without notice. Offers are non-transferable. ODP Business Solutions reserves the right to limit quantities sold to each customer. We are not responsible for errors.



CU AUDIT & COMPLIANCE GROUP

Marcus King
22 Inverness Center Parkway, Ste 200
Birmingham, AL 35242
Phone: 662-322-1038
marcus.king@cuacg.com
www.cuacg.com

Credit Union Audit and Compliance Group (CUACG), the largest credit union audit and compliance firm within the Southeast, provides expertise to help over 220 credit unions navigate the changing regulatory and compliance environment. CUACG's team of auditors are made up of credit union experts that will better help credit unions succeed. CUACG serves only credit unions and is solely focused on providing value to clients. CUACG currently provides services for credit unions throughout the Southeast. We have auditors throughout the Southeast which allows CUACG to personally meet the needs of your credit union.



CUNA MUTUAL GROUP

Ann K. Michels
5910 Mineral Point Rd
Madison, WI 53701
Phone: 608-665-6016
ann.hessel@cunamutual.com
www.cunamutual.com

CUNA Mutual Group is a financially strong insurance, financial technology and investment company. With roots in the credit union movement, we have a generations-long history of working with financial institutions to protect and grow their businesses. We enable our customers to help their customers achieve financial stability through solutions that stay ahead of the pace of today's rapidly changing marketplace. The companies of CUNA Mutual Group offer commercial, personal insurance products; lending solutions; retirement, investment, data and analytics, and marketing services. Learn more at www.cunamutual.com.



CU*ANSWERS

Scott Collins
6000 28th St SE
Grand Rapids, MI 49546
Phone: 800-327-3478
scollins@cuanswers.com
www.cuanswers.com

CU*Answers is a 100% credit union-owned Cooperative CUSO, providing technology solutions for credit unions to grow and aggressively compete. This includes its flagship CU*BASE® processing system, available in either a SaaS or an in-house environment, leading edge self-service products, imaging and archival solutions, strategic planning, management consulting services, data analytics, and much more. CU*Answers offers expertise in implementing technical solutions to operational needs, and is a leader in helping credit unions develop strategic business alliances, integrating and delivering new products to market quicker.



CU*SOUTH

Starla Honea
23210 US Hwy 98, Suite B-1
Fairhope, AL 36532
Phone: 251-317-3888
shonea@cusouth.com
www.cusouth.com

As a 100% credit union-owned service organization, CU*SOUTH is a trusted technology partner committed to credit union growth and prosperity through technology and service. CU*SOUTH offers a powerful, fully integrated core processing tools members depend on and expect. In addition, credit unions rely on CU*SOUTH for proven, essential services that drive revenue and reduce costs, including accounting, staffing support, collections and IT management.



CUVM

Kelli Silvernale
3692 Coolidge Court
Tallahassee, FL 32311
Phone: 850-558-1082
kelli@cuvm.org
www.cuvm.com

CUVM provides vendor management services for businesses. Our solution provides cloud-based technology to efficiently collect and distribute due diligence documentation, and manage vendor relationships. We provide a dedicated analyst and a team of support staff to ensure the success of your Vendor Management program.

Services Include:

- Free Sample Board Policy
- Risk Assessment
- Limited Review Assistance
- Vendor Document Repository
- Archived Documents
- Permission based access to the CUVM Contract Management System
- Disaster Recovery Tool



DELUXE

Karen Frazee
3692 Coolidge Court
Tallahassee, FL 32311
Phone: 850-558-1112
karen.frazee@myleverage.com
www.myleverage.com

Being successful in today's financial arena means being flexible to the ever-changing demands and preferences of your account holders. At Deluxe, we strive to be an indispensable partner to credit unions and the small businesses they serve. We help unlock business potential with our Trusted Payments & Business Technology™ solutions to help you pay, get paid and grow. Whether you want to optimize your check program, have better access to your credit union's performance, drive revenue, or create long-lasting account holder relationships, Deluxe is the partner who can help you achieve success.

DESIGN BUILD SOLUTIONS INC.

Michael Wood
8370 W. Hillsborough Ave, Suite 203
Tampa, FL 33615
Phone: 813-374-9401
mwood@designbuildsolutionsinc.com
www.designbuildfacilitysolutionsinc.com

Design Build Solutions Inc. was founded specifically to assist financial institutions in Alabama, Florida and Georgia design and build better, more efficient and profitable facilities. From discrete site identification and evaluation thru effective design and construction, Design Build Solutions Inc. will partner with you to deliver a new approach to the member experience.



DDI TECHNOLOGY

Karen Frazee
3692 Coolidge Court
Tallahassee, FL 32311
Phone: 850-558-1112
karen.frazee@myleverage.com
www.myleverage.com

DDI Technology provides a complete title management suite for financial institutions nationwide. Our solution enables your team to streamline processes, improve reporting, and manage exceptions with a simple, user-friendly application. Additional system features include total-loss payoff, user customization and integration. DDI can assist all 50 states while providing exceptional customer service. DDI Technology is a member of the IAA, Inc. family of companies and focuses on delivering superior products, professional service and high-touch customer service for all areas of vehicle title management. DDI fosters partnerships with progressive and innovative businesses by supplying new technologies; enabling partners to provide superior service to their customers while delivering time efficiencies and reducing operating costs.



DOEREN MAYHEW

John Murnane, CPA
12060 SW 129th, Ste 201
Miami, FL 33186
Phone: 888-433-4839
murnane@doeren.com
www.doeren.com

Recognized as a top 60 accounting firm and top two credit union audit firm, Doeren Mayhew serves over 350 financial institutions across the nation ranging in various asset sizes. Leveraging over 45 years of industry experience, our Financial Institutions Group takes an integrated approach to servicing clients. With more than 85 dedicated credit union professionals, the group is segmented into areas staffed with those who specialize in diverse technical skill-sets to provide a variety of services, including external and internal audits, regulatory compliance, loan reviews, merger advisory, cybersecurity, IT advisory and strategic advisory services. Learn more about Doeren Mayhew by visiting our website at www.doeren.com.

DUNN LAW, P.A.

Joshua C. Kligler
66 West Flagler St., #400
Miami, FL 33130
Phone: 786-433-3866
joshua.kligler@dunnlawpa.com
www.dunnlawpa.com

Dunn Law, P.A. is a Miami-based law firm that provides a wide variety of services to its clients throughout the State of Florida including, creditor's rights, collections, bankruptcy, commercial litigation, real estate title and closings. DLPA offers a team of seasoned lawyers who understand both the legal and business side of issues. We understand that clients want value first and foremost. DLPA has a proven track record of assisting its clients in meeting their business objectives efficiently and at a reasonable cost. In fact, DLPA often handles its collections on a contingency basis, so if there is no recovery, then there is no attorney's fee.



DYNAMIC QUEST

Karen Frazee
3692 Coolidge Court
Tallahassee, FL 32311
Phone: 850-558-1112
karen.frazee@myleverage.com
www.myleverage.com

Dynamic Quest offers IT services strategically focused on your business. Whether you're looking to improve processes, stabilize your network, control costs or boost productivity, our staff of experts is nearby and ready to get you where you want to go. Dynamic Quest is focused on taking care of traditional break-fix aspects of business, as well as exceeding expectations and providing technical resources to support businesses as they propel forward.

E

ECONOCHECK

Paxton Sakha
3 Gresham Landing
Stockbridge, GA 30281
Phone: 404-376-8536
paxton@econocheck.com
www.econocheck.com

Econocheck delivers bottom-line benefits to financial institutions by strengthening account holder relationships and providing new fee income streams. Since 1973, thousands of financial institutions have profited from Econocheck's data-driven retail and small business checking strategies, direct response insurance programs, and identity protection services.



EVERVIEW

Karen Frazee
3692 Coolidge Court
Tallahassee, FL 32311
Phone: 850-558-1112
karen.frazee@myleverage.com
www.myleverage.com

EverView is a global provider of leading digital and print member statement solutions. We deliver end-to-end, fully-integrated solutions, all while meeting regulatory and security requirements. Harness data, drive digital adoption, and improve member experiences with one trusted source.



Competitor's
Market Share 14%

**Stay Competitive.
Make Sound Decisions.**

Loan Maturing Date
October 31, 2030

Last Sold
January 22, 2022

Access in-depth real estate facts & tools.

- Market Share Analysis
 - Property Comparables
 - Sale & Mortgage History
 - Loan Prospecting
 - Public Tax Records
 - Compliant In-house Evaluations
- And More...

We have the details you need - when you need them.

Backed by over 30 years of industry-leading experience, we're dedicated to curating and validating property data so you can take action to optimize performance, increase revenue, and gain insights into competitive market activity.

SCHEDULE A PRESENTATION TODAY.

Jason Pruitt | Financial Solutions

770-883-6609 | jpruitt@crsdata.com | crsdata.com/financial



CRS Data



Gallagher

Insurance | Risk Management | Consulting



RETAIN AND REWARD YOUR KEY LEADERS

Prepare your credit union to soar to new heights by helping to ensure you have the right people at the helm. With one-third* of credit union CEOs preparing to retire, Boards can minimize disruption with a strong Executive Benefits program. We support Boards with:

- Custom-designed nonqualified benefit plans
- Benchmarking data for executive compensation and benefits
- Strategies to mitigate expenses while maximizing benefits



Gallagher is the NAFCU Preferred Partner for Executive Benefits and Compensation Consulting. Learn more at www.NAFCU.org/Gallagher

STRENGTHEN YOUR SUCCESSION PLAN

Your succession plan depends upon retaining key leaders and developing future talent. Benefits with strong retentive qualities are crucial to your plan's success. Gallagher can audit your existing Executive Benefits or design a program that achieves your strategic goals.

** 2022 NAFCU-Gallagher Executive Compensation and Benefits Survey*



Learn how Gallagher's Executive Benefits Team can help you by scanning the QR code or visiting www.gallagherexecben.com

These awards are not investment-related or based upon performance or returns experienced by any client or opinions of the advisor's clients or former clients. Third-party rankings and recognitions are no guarantee of future investment success and do not ensure that a client or prospective client will experience a higher level of performance or results. These ratings should not be construed as an endorsement of the advisor by any client nor are they representative of any one client's evaluation.

Gallagher Fiduciary Advisors, LLC ("GFA") is an SEC Registered Investment Advisor that provides retirement, investment advisory, discretionary/named and independent fiduciary services. GFA is a limited liability company with Gallagher Benefit Services, Inc. as its single member. GFA may pay referral fees or other remuneration to employees of AJG or its affiliates or to independent contractors; such payments do not change our fee. Securities may be offered through Triad Advisors, LLC ("Triad"), member FINRA/SIPC. Triad is separately owned and other entities and/or marketing names, products or services referenced here are independent of Triad. Neither Triad, Arthur J. Gallagher & Co., GFA, their affiliates nor representatives provide accounting, legal or tax advice. GFA/Triad CD (5423418)(exp012025)



Insurance | Risk Management | Consulting

GALLAGHER EXECUTIVE BENEFITS

Liz Santos
4250 Congress Street, Suite 200
Charlotte, NC 28209
Phone: 980-867-7458
Liz_Santos@ajg.com
www.gallagherexecutivebenefits.com

Gallagher Executive Benefits specializes in nonqualified benefit plans for credit unions, including split dollar and 457(f) plans. Nearly 600 credit unions rely upon us to manage their executive benefits programs. Our annual NAFCU-Gallagher Executive Compensation and Benefits Survey helps credit unions stay competitive and retain their key talent. Gallagher is the NAFCU Preferred Partner for Executive Benefits and Compensation Consulting. Learn more at www.NAFCU.org/Gallagher.

GROWTH BY DESIGN

Kristi Arrington
2810 Premiere Pkwy, Ste 150
Duluth, GA 30097
Phone: 866-231-0545
kristia@growthbydesign.org
www.growthbydesign.org



Growth by Design is an all-inclusive marketing, communication, and consulting agency with over 100 years of experience. Our unique selling point is our deep understanding of credit unions, and we offer end-to-end support from strategy to execution on various platforms. Let us help elevate your brand!



HC3

Jennifer Deaver
2461 1st Ave., S.
Birmingham, AL 35210
Phone: 205-838-2345
jdeaver@hc3.io
www.hc3.io

Headquartered in Birmingham, Ala., HC3 connects financial institutions to their customers. By outsourcing bank statements with HC3, financial institutions leverage document design, digital delivery, and print delivery. Through these solutions, banks and credit unions can make a statement that reflects their brand. For more information, call (877) 838-2345 or visit www.hc3.io.



KUDULIS
REISINGER
PRICE

KUDULIS REISINGER AND PRICE, LLC

Edward Reisinger
2000 Southbridge Parkway, Ste 415
Birmingham, AL 35209
Phone: 800-666-3151
ed@krpfirm.com
www.krpfirm.com

Kudulis Reisinger and Price provides a full-service legal, compliance, and preventive law program to credit unions throughout the south. Our attorneys understand the importance of practical operational considerations, and we dedicate our practice to credit unions and CUSOs. Our pro-active law program provides advice to the problems and challenges created by legal developments. Clients have a Lawyer on Call who is always available because advice is worthless after you act. All of our attorneys are familiar with credit union law, and we can provide an immediate answer and do not require you schedule a call to speak to an attorney.



LENDKEY

Karen Frazee
3692 Coolidge Court
Tallahassee, FL 32311
Phone: 850-558-1112
karen.frazee@myleverage.com
www.myleverage.com

LendKey provides credit unions easy access to whole and participation loans through its digital lending platform, which includes origination, servicing, and balance sheet management solutions. Over the last 10 years, LendKey has facilitated over \$4 billion for its credit union partners in private student loans, student refinance and home improvement loans. LendKey's unique loan participation model allows for fractional ownership in loans, empowering credit unions to broaden their portfolio while mitigating risk. LendKey manages the entire life of the loan process, as well as contributing to marketing and lead generation efforts.



LEVERAGE BENEFITS GROUP

Karen Frazee
3692 Coolidge Court
Tallahassee, FL 32311
Phone: 850-558-1102
karen.frazee@myleverage.com
www.myleveragebenefits.com

LEVERAGE Benefits Group, a partnership between LEVERAGE and Salus Group, is an experienced benefits consulting firm among credit unions. LBG offers a turnkey solution that provides comprehensive and competitive benefits as well as extensive services to credit unions and their employees. Services include benefit consulting, carrier administration, online enrollment, consolidated invoicing, compliance reporting and much more.



LEVERAGE PAYMENT SOLUTIONS

Lindsey Cole
3692 Coolidge Court
Tallahassee, FL 32311
Phone: 850-558-1198
lindsey.cole@myleverage.com
www.myleverage.com

LEVERAGE Payment Solutions provides a comprehensive array of services for credit unions. These services include debit and credit card processing, surcharge free network access, rewards, and consultative support. Our approach is to partner with our credit unions in developing an overall card strategy with the purpose of maximizing the relationship between the credit union and their members. These strategies and the corresponding solutions are tailored to meet the specific needs of each credit union we work with, regardless of size.



LEVERAGE REWARDS

Lindsey Cole
3692 Coolidge Court
Tallahassee, FL 32311
Phone: 850-558-1198
lindsey.cole@myleverage.com
www.myleverage.com

Credit unions are always looking for ways to enhance their engagement with members. *LEVERAGE* Rewards is a valuable program that not only increases loyalty, but also transaction volume. What makes *LEVERAGE* Rewards unique is that it can be used on a variety of products and programs for members as well as employees. The program links multiple accounts to an individual, along with family members, to help the member earn points quicker. The program also offers a customizable website, marketing and performance consulting, and a dynamic suite of administration tools for a turnkey program.

M



MAGIC-WRIGHTER, INC.

Jeff Dean
1039 3 Mile Rd., NW
Grand Rapids, MI 49544
Phone: 866.770.5856
jdean@magicwrighter.com
www.magicwrighter.com

Magic-Wrighter, your single source for payment solutions, partnerships, and opportunities. We celebrated 40 years in 2022, with unrivaled experience and a distinctive understanding of trends in the payments industry. More than one thousand financial institutions across the U.S., and thousands of businesses and non-profits have selected MWI as their payments technology partner. Discover the latest in ACH and Credit Card processing for API-Integrations, SSO, or standalone systems. Our solutions include loan payment servicing, business-class ACH, RDC, new account funding, and more. Whether a first-time payments deployment or next-level enhancement, the MWI team is ready to help your institution succeed.



MBFS

Karen Frazee
3692 Coolidge Court
Tallahassee, FL 32311
Phone: 850-558-1112
karen.frazee@myleverage.com
www.myleverage.com

Member Business Financial Services (MBFS) is a Credit Union Service Organization (CUSO) that assists credit unions in funding business loans within their market and provides individualized servicing options tailored to each of the credit unions it serves. Headquartered in Bucks County, PA, MBFS' remote workforce provides nationwide loan servicing, portfolio management, loan underwriting, coordination of loan participations, and preparation of loan documents. Currently serving over 80 credit unions with a combined portfolio in excess of \$2 billion in member business loans, MBFS is positioned to continue expansion of its member business lending, participation, and servicing success.

MEMBERS ATM ALLIANCE



Kyle Fowler
2810 Premiere Parkway, Ste 150
Duluth, GA 30097
Phone: 678-542-3479
MAAInfo@membersatm.org
www.membersatm.com

Members ATM Alliance is a Credit Union Service Organization (CUSO) created to assist credit unions in ATM management. We offer everything from monitoring and cash management to maintenance and terminal driving. Let us take the hassle out of managing your ATM fleet.

MEMBERS CORE ALLIANCE



Kyle Fowler
2810 Premiere Parkway, Ste 150
Duluth, GA 30097
Phone: 678-542-3479
kyle.fowler@lscu.coop
www.memberscorealliance.com

The Members Core Alliance provides credit unions with a solid, reliable and user friendly core processing platform through a cooperative effort among those you already know and trust... your peers! We enable credit unions to outsource their core data processor to a common platform while streamlining operations, lowering expenses, and easing their compliance burdens.

N



NEARMAN, MAYNARD, VALLEZ, CPAS

Chris Vallez
10661 N Kendall Drive, Ste 201
Miami, FL 33176
Phone: 305-598-1730
info@nearman.com
www.nearman.com

Established in 1979, Nearman, Maynard, Vallez, CPAs has provided auditing and consulting services exclusively to credit unions throughout the United States. Our dedication to credit unions has given us the unique ability to provide exceptional service at a reasonable price. Our primary objective is to assist our clients in accomplishing their goal of being the best financial institution for their members. This objective is achieved through the quality of our audits, an excellent level of client service, and the overall value we provide. Our services include certified audits, Supervisory Committee Guide audits, pension audits, internal audit, compliance, and much more!



NEURAL PAYMENTS

Lindsey Cole
3692 Coolidge Court
Tallahassee, FL 32311
Phone: 850-558-1198
lindsey.cole@myleverage.com
www.myleverage.com

Users of the Neural Payments P2P solution can send money anywhere, anytime via a seamless open-loop experience. The Neural Payments functionality offers the ability to easily send funds both inside and outside of the Neural Payments ecosystem via existing integrations with Paypal, Venmo, FedNow and debit card accounts. Members want to be able to send money seamlessly, and from within the security of their trusted digital banking ecosystem, without the need to worry about the application that the receiver may be using. Neural Payments has given the end-user the ability to choose where they want their money to go.

Shared Services for Credit Unions

Shared Branching



THE PINNACLE OF THE COOPERATIVE SPIRIT

Convenience, Member Retention, Disaster Recovery

Join the Network that gives your Members access to branches nationwide and overseas. No matter where your members are going – down the street, to another state or across the world, we are there for them.



For more information,
visit www.ss4cu.com
Contact: Jay Hogan
(561) 869-8613

The Member Friendly Network

8895 N. Military Trail, Ste. 104D • Palm Beach Gardens, Florida 33410



Unique Partnership
Options



State-of-the-art
Technology



Excellent Income
Potential



Customizable
Servicing Solutions



Learn more at DiscoverMFM.com

Member First Mortgage, LLC
NMLS ID# 149532



deluxe[®]
trusted payments & business technology

Your Partner in Possibility

Unlock business potential with trusted and tech-forward solutions that help you grow and operate more efficiently. From check program optimization to better access to your financial institution's performance and more, Deluxe is the partner to help you achieve success.

Learn more at www.myleverage.com.

NEXTBRANCH

Alison Rockwell
498 N. Kays Drive, #110
Kaysville, Utah 84037
Phone: 904-801-7346
alison.rockwell@nextbranch.com
www.nextbranch.com

NextBranch specializes in providing customized ATM outsourcing services to credit unions. A managed services ATM outsourcing program from NextBranch can reduce ATM capital and operating costs by up to 30% and help to provide much-needed solutions to today's staffing challenges. Having the operational aspects of a credit union's ATM network managed by NextBranch allows branch leadership to focus on growing business and improving margins. NextBranch is a member of the Grant Victor family of companies, the largest provider of Hyosung Core Integrated ATMs, ITMs, and TCRs in the United States, with over two decades of experience in the ATM industry.

O



ODP BUSINESS SOLUTIONS

Karen Frazee
3692 Coolidge Court
Tallahassee, FL 32311
Phone: 850-558-1112
karen.frazee@myleverage.com
www.myleverage.com

ODP Business Solutions, LLC is a leading B2B provider of business services, office products, innovative technology, comprehensive furniture solutions and an extensive selection of facilities and breakroom supplies with a national footprint and hundreds of experienced business advisors. As a trusted partner, ODP Business Solutions supports over 120,000 corporate clients with navigating the often-complex needs of today's business environment. From accessing comprehensive solutions and strategic alliances, to supply chain innovation and robust digital platforms, ODP Business Solutions helps customers achieve business results across every industry and platform. For more information visit www.myleverage.com and follow on LinkedIn, Twitter and Facebook.

P



PAR NORTH AMERICA

Karen Frazee
3692 Coolidge Court
Tallahassee, FL 32311
Phone: 850-558-1112
karen.frazee@myleverage.com
www.myleverage.com

PAR North America is the leading nationwide provider of vehicle transition services including recovery management, skip tracing, compliance and repossession title services. PAR leverages its corporate family connections under the KAR Global umbrella to provide unique end-to-end solutions for its clients. PAR has a distinct advantage over their competition due to their strategic partnerships within KAR Global and their affiliations with numerous technology sources and service providers.



PIVOT GROUP LLC

Karen Frazee
3692 Coolidge Court
Tallahassee, FL 32311
Phone: 850-558-1112
karen.frazee@myleverage.com
www.myleverage.com

PIVOT Group LLC is an Independent and Objective Audit, Assessment, and Compliance Services Firm. Focusing on Reg 748 A&B and PCI Services. PIVOT Group LLC is also an approved LEVERAGE Business Partner.



PRINT RESOURCES, INC.

Karen Frazee
3692 Coolidge Court
Tallahassee, FL 32311
Phone: 850-558-1112
karen.frazee@myleverage.com
www.myleverage.com

Print Resources Inc is a long proven provider of credit union print collateral. From traditional print materials and operational forms, to integrated cross-media marketing solutions, Print Resources can create, convey and deliver your messaging through multiple channels. Print Resources Inc along with EverView is also a leading provider in the processing and production of printed Statements, e-Statements, Notices and Tax Forms. We currently serve almost 800 credit unions in the U.S.

Q



QSI

Sandy Edwards
107 Schuler Drive
Bardstown, KY 40004
Phone: 502-350-7839
sandy.edwards@qsibanking.com
www.qsibanking.com

QSI is NCR's largest financial partner. We offer turnkey ATM and ITM solutions, including outsourcing and in-housing financing. Other solutions include TCRs, video, alarm, security and branch equipment. Availability and security are assured with QSI maintenance, cybersecurity and managed services.

R



THE REDMOND COMPANY

Marty Steinert
W228 N745 Westmound Drive
Waukesha, WI 53186
Phone: 265-549-9600
msteinert@theredmondco.com
www.theredmondco.com

The Redmond Company, your premier design/build partner, has completed 800+ financial institution projects. Experts in Prescriptive Consumer Analytics, Market Analysis, Trade Area Analysis, Branch Deployment Studies, Site Identification and Acquisition, Brand Integration, Architecture and Construction. Redmond uses advanced analytics to identify your optimal market, trade area, area of influence and site, using "The Science of Where" and Prescriptive Consumer Analytics. Ultimately, increasing the potential profitability and ROI of your facility by selecting the best and most profitable location. Let our award-winning team help you increase the potential profitability of your facilities, improve employee productivity and enhance member experiences.

REPAY

Aaron Dils
3 West Paces Ferry Rd. NW, Suite 200
Atlanta, GA 30305
Phone: 877.607.5468
info@repay.com
www.repay.com/who-we-serve/
credit-unions/

Simplify payment processing, streamline reconciliation, reduce servicing costs and deliver a convenient, self-serve experience for members through REPAY's (NASDAQ: RPAY) next-generation payment technology. Integrated with the leading core systems, REPAY enables credit unions to accept payments anytime, anywhere and instantly fund loans through realtime disbursements. Industry experts deliver the advanced payment solutions of today while anticipating and preparing for the needs of tomorrow. REPAY sets the industry standard for making members matter most.

S



SAGE DIRECT, INC.

Peter Beaudet
3400 Raleigh Drive SE
Grand Rapids, MI 49512
Phone: 904-295-5906
pbeaudet@sagedirect.com
www.sagedirect.com

Sage Direct excels in partnering with financial institutions and marketers to provide accurate, secure, and cost-effective document processing and marketing services. We generate mailed, electronic, credit card and mortgage statements. Additional services include daily notices, tax forms and target marketing.

SHARED COOPERATIVE SERVICES, LLC

Laura Vann
22 Inverness Center Parkway, Suite 200
Birmingham, AL 35242
Phone: 205-437-2181
laura.vann@myscservices.com
www.sharedcooperativeservices.com

Shared Cooperative Services is the shared branching network for Alabama and Georgia and is affiliated with the national shared branching network, CO-OP Shared Branch. Open doors to your members at more than 5,000 locations in all 50 states, including over 330 locations in Alabama and Georgia. Shared Cooperative Services and CO-OP Shared Branch are the solution for your business continuity and member convenience needs.



Shared Services
for Credit Unions

SHARED SERVICES FOR CREDIT UNIONS

Jay Hogan
8895 N Military Trail, Suite 104-D
Palm Beach Gardens, FL 33410
Phone: 561-869-8613
jhogan@ss4cu.com
www.ss4cu.com

Shared Services for Credit Unions connects Florida credit unions to CO-OP Shared Branch for over 5,600 nationwide locations making networked credit unions #1 compared to the top banks in the country. Shared Branching is not only a cost effective branch solution, it also provides peace of mind in the event of a disaster. Looking for non-interest income? Florida, being a top destination state, provides many credit unions added revenue while simply fulfilling the "people helping people" credit union mission. Shared Branching is a win for you and your members!

SORENSEN VAN LEUVEN LAW FIRM

Jim Sorenson/Tyler Van Leuven
2015 Delta Blvd.
Tallahassee, FL 32303
Phone: 850-388-0500
jim@svllaw.com; tyler@svllaw.com
www.svllaw.com

Sorenson Van Leuven is a law firm providing legal services to Credit Unions for collections, bankruptcy, foreclosure, and litigation matters. Further, we provide consulting to Credit Unions on matters related to loss mitigation, collections, recovery and loan servicing issues. We have attorneys licensed in Florida and Georgia.

STIFEL

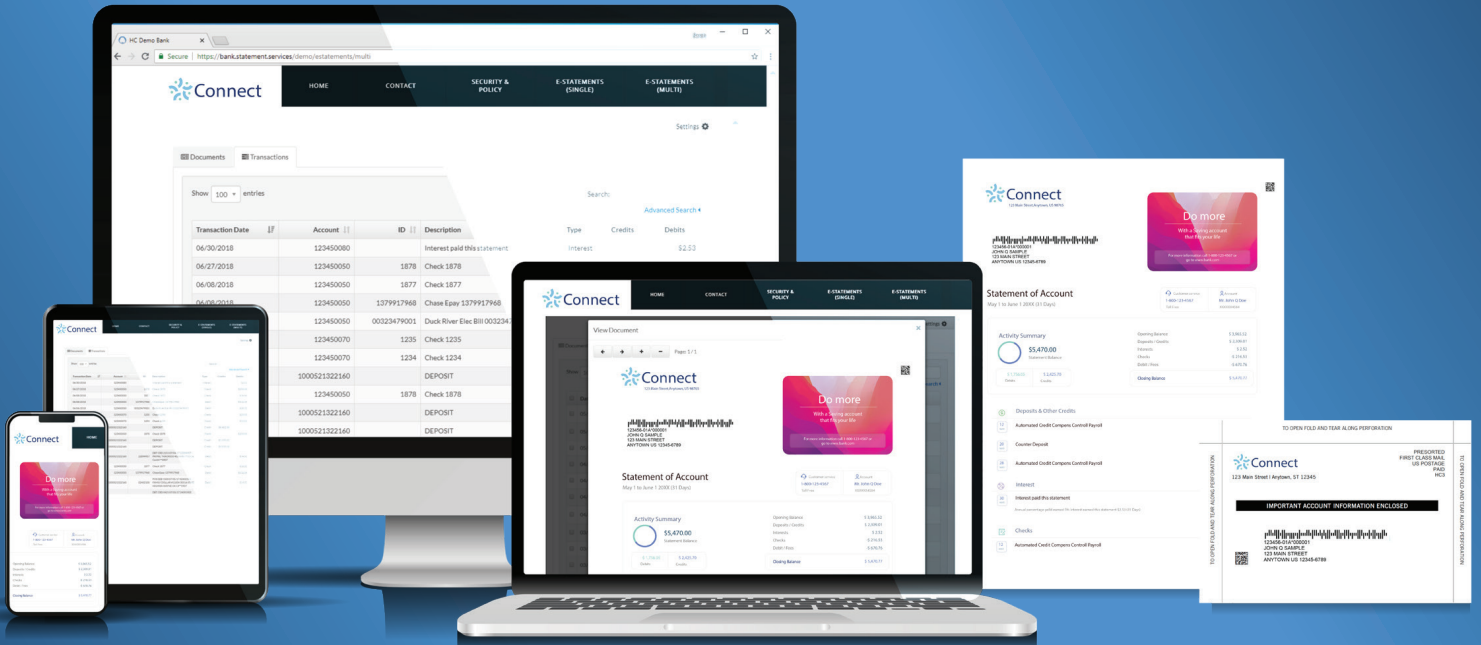


STIFEL

Karen Frazee
3692 Coolidge Court
Tallahassee, FL 32311
Phone: 850-558-1112
karen.frazee@myleverage.com
www.myleverage.com

Stifel is a fixed income firm focused on the investment and balance sheet management needs of middle market institutional investors, with an emphasis on depository institutions. Stifel began as a securities dealer with an Asset/Liability Management focus over 35 years ago and continues serving depository institutions with the total balance sheet in mind. The firm is employee owned and has over \$90mm in partners' equity and an annual trading volume averaging \$150 billion with customers located in all 50 states and many foreign countries. The firm also ranks in the top 15 underwriters of new U.S. Agency debt nationwide.

Focus on the member experience



Make a statement with customized communications to enhance your member experience. Contact us to learn more.

**AUTHORIZED
HYOSUNG
RESELLER**



More Than An ATM Source...A Solution

Absolute Financial Equipment has an extensive inventory of new and fully refurbished ATMs, TCRs, Interactive Teller Machines, Recycling ATMs, ATM parts and supplies that can save you money without sacrificing the quality you deserve. We offer nationwide 1st and 2nd line maintenance services to keep your equipment running at peak performance. We will guide you to the correct solutions to save you time, money and ensure you are getting the best value and highest quality products, support and service.. Check out our website or contact us to see everything we have to offer you.



Interactive
Teller
ATMs

Recycling
ATMs



Absolute Financial Services, Inc.
Carl B. Schiber
carl@afsiatms.com
PH: (727) 753-0233
WWW.AFSIATMS.COM



Teller Cash
Recyclers



Deposit
Automation
ATMs

T



TRU TREASURY



TRU TREASURY

Karen Frazee
3692 Coolidge Court
Tallahassee, FL 32311
Phone: 850-558-1112
karen.frazee@myleverage.com
www.myleverage.com

Tru Treasury is the only credit union service organization (CUSO) that offers full-service treasury management solutions to the credit union industry. CUSO solutions include cash management products, treasury risk tools, treasury product operational support, treasury sales augmentation, and program advisory services. By partnering with Tru Treasury, credit unions can provide their members and prospects with leading treasury services while also building a valuable commercial portfolio. Tru Treasury enables credit unions to compete more effectively with traditional treasury management providers and grow their operating deposits and value-added non-interest income. With Tru Treasury, credit unions can enhance their financial offerings, better serve their business members, and achieve a more profitable, diversified member portfolio.

U



UNITAS FINANCIAL SERVICES

Matt Moore
6543 Commerce Parkway, Suite M
Dublin, OH 43017
Phone: 502-268-1021
matt.moore@unitas360.com
www.unitas360.com

Unitas is an industry-leading provider of compliant risk management solutions for Blanket Mortgage Hazard, Vendor's Single Interest (VSI Blanket), Lender-Placed Insurance and other specialty insurance programs. Embracing the financial industries ever-changing regulatory and compliance standards, Unitas enables access to innovative risk management solutions to our lender-clients that meet their unique needs in mitigating and transferring risk. Through valued leadership and partnerships, Unitas is confident in their mission to develop and deliver innovative and fully customizable risk management solutions for financial institutions, further enabling them to remain strong, efficient, and protected as they continue to grow and enrich their communities.

V



VISA

Jorge Esteban
1004 NW 65 Avenue
Miami, FL 33126
Phone: 917-318-1028
jeseteban@visa.com
www.visa.com

Visa Inc. (NYSE: V) is the world's leader in digital payments. Our mission is to connect the world through the most innovative, reliable and secure payment network - enabling individuals, businesses and economies to thrive. Our advanced global processing network, VisaNet, provides secure and reliable payments around the world, and is capable of handling more than 65,000 transaction messages a second. As the world moves from analog to digital, Visa is applying our brand, products, people, network and scale to reshape the future of commerce. For more information, visit <https://usa.visa.com/> or <https://visa.com/creditunions>.



VOLUNTEER CORPORATE CREDIT UNION

Dale Goode
2460 Atrium Way
Nashville, TN 37214
Phone: 800-470-3444
dgoode@volcorp.org
www.volcorp.org

VolCorp's mission is to inspire credit unions to reach new heights by providing dynamic payment solutions, custom investment services, and unparalleled member service. Headquartered in Nashville, Tennessee, VolCorp has been serving the credit union movement since 1981. VolCorp equips credit unions with the products and services to help them prosper. Our CUSO, Symphony, offers guidance to credit unions in critical areas such as Business Continuity Management, Enterprise Risk Management, Information Security, and Supervisory Committee Audits. To learn more about VolCorp, please visit volcorp.org.



VYFI, LLC

Alan W. Ropes
1659 Achieva Way, STE 102
Dunedin, FL 34698
Phone: 727-293-4689
aropes@vyfi.com
www.vyfi.com

Our CUSO specializes in assisting and guiding Credit Union clients through the performance of audits, assessments, and examinations. We focus on the identification of cyber threats and in meeting regulatory governance, information security, and compliance requirements as mandated by NCUA, state regulators and the Federal Reserve. Services are tailored specifically to individual credit union needs and are offered as bundled packages or à la carte. As a CUSO, all profits remain within the credit union family.



Indirect Lending For The Next Frontier



ABOUT US

For over 23 years, CUAC has been THE choice for innovative and dynamic indirect solutions. CUAC is a Credit Union owned CUSO that provides a true menu-based approach to indirect lending, which allows credit unions to choose products and services that fit their exact needs.

WHY CHOOSE US

Indirect lending can be a minefield if not done correctly. Rely on CUAC's vast experience and expertise to help you navigate the indirect lending landscape. The industry is rapidly changing and credit unions must harness current technology to keep up with their members' lending needs. CUAC allows its lenders to plug into industry-leading technology to ensure adequate representation at the point of sale.



CUSTOMIZATION

Many providers claim they are "custom", but are they? CUAC provides credit unions the ability to choose from a truly a-la-carte approach. Credit unions can take advantage of the services needed to complement their program, while performing the tasks they choose. Services include dealer representation, underwriting (standard or after-hours), loan processing, funding and ACH. Choose an indirect solution provider that gives you everything you need, and nothing you don't.



TECHNOLOGY

To remain competitive in today's indirect world, credit unions must take advantage of industry-leading technology; this includes Dealer-track and RouteOne application platforms, eContracting, Digital Document Solutions and real-time data analytics. CUAC allows credit unions to take advantage of all the current technology while ensuring that they are positioned for whatever is next.



COST EFFECTIVE

CUAC provides the ability for credit unions to utilize all the latest technology and take advantage of a vast array of services with little to no up-front investment. Do you want your members to benefit from cutting-edge technology at a fraction of the cost? Please give us a call today.



DATA DRIVEN

In today's world, data is the key for managing loan productivity and profitability. Instead of relying on clunky LOS reports, take advantage of CUAC's PowerBI real-time dashboard solution. The CUAC solution provides instant access to rates, paper quality, pipeline trends and querying tools to create custom data sets.

Kurt Howard | Chief Operating Officer | Khoward@cuacuso.com | 866.970.2822 ext. 111

9601 Jones Road, Suite 108 | Houston, TX 77065 | cuac.com



CorporateAmerica
CREDIT UNION

DIFFERENT STARTS HERE™

YOUR FASTER PAYMENTS HEADQUARTERS

- **REAL TIME PAYMENTS**
- **FEDNOW**
- **RISE - LOAN PAYMENT PORTAL**
- **PIDGIN - P2P APPLICATION**

services@corpam.org
1.800.292.6242



Auditing credit unions isn't just what we do;
it's all we do.



www.nearman.com

info@nearman.com

800.288.0293

Since 1979, our firm has been committed to one industry, **the credit union industry**. That means 100% of our clients are credit unions or credit union service organizations. Our commitment to one industry allows for an efficient audit with highly trained auditors that know your business.

Put our experience to work for you today!

● **FINANCIAL INSTITUTION SOLUTIONS**

- Loan Payments - Web, Tel, PPD
- ACH Dealer Funding
- API & Vendor Integrated Solutions
- A2A On-Demand Transfer
- Fedline Disaster Recovery

● **BUSINESS-CLASS
TREASURY SOLUTIONS**

- Online Payments
- Remote Deposit Capture
- ACH Origination/Cash Management
- Marketing and Training Solutions

● **ACH and
CREDIT CARD PROCESSING**

**Trusted by more than 5,000 Financial Institutions,
Business Organizations and schools since 1982!**

sales@magicwrighter.com | 866.770.5856 | www.magicwrighter.com

Inspire. Deliver. Amaze.



➔ **COST BENEFIT SAVINGS**
PLAN ENHANCEMENTS



- Brokerage Consulting
- Compliance Oversight & Services
- ACA Reporting
- COBRA Administration

WANT TO LEARN MORE?
GET IN TOUCH!

Karen Frazee
850.545.4825
karen.frazee@myleverage.com

thesalugroup.com/leveragebenefitsgroup



- Online Benefit Enrollment
- Carrier Administration
- Custom Employee Education
- Credit Union/CUSO Expertise



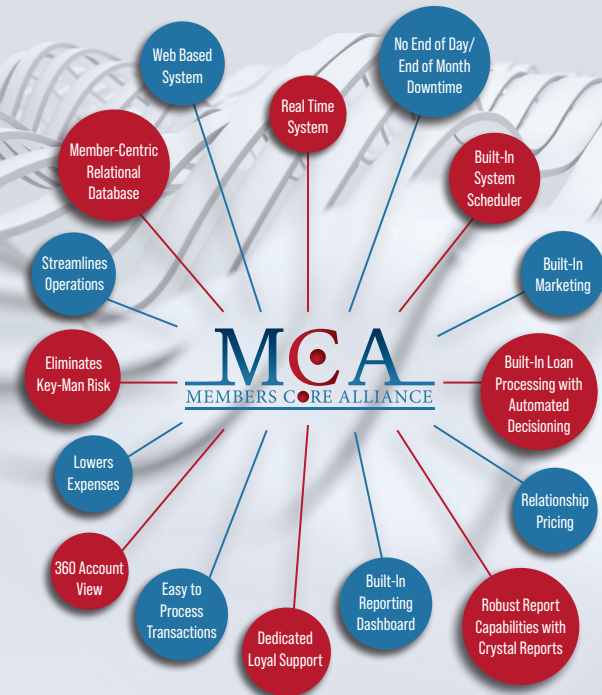
**Let us take the hassle out of
managing your ATM fleet.**

**Members ATM Alliance offers all of
the following services:**

- ATM Monitoring
- Cash Management
- Communications
- Deposit Processing
- First Line Maintenance
- Hardware Maintenance
- Software Maintenance
- Marketing
- Reg E Claims / Disputes
- Regulatory Compliance
- Terminal Driving
- Transaction Switching
- Access to over 32,000 surcharge-free ATMs nationwide

**Are you looking to streamline operations, lower
expenses and ease compliance burden?**

**If so, Members Core Alliance is here to help by offering
access to a common core data platform that we
manage on your behalf.**



What does it mean when we say you can **EXPECT MORE** from VolCorp?

Your credit union will get our best each and every time.

Our staff is focused on taking care of our members. It's what a partner does.

When you can *Expect More* from us, you can *do more*.

We often hear from credit unions looking for particular solutions, and they're pleased when we say, "Yeah, we do that!". Expect more. Do more. We're here to help.

You will get great value for your money.

Just like you, we're a credit union. We understand your need to make less go further, now more than ever before.



Ready to EXPECT MORE?

Let us know how we can help. Contact us today at marketing@volcorp.org, or 800-470-3444, Extension 3.



Enhance Member Experience

Integrated Statement and Payment Platform

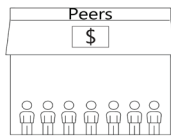
- Traditional Print & Mail
- eStatements & eAdoption
- Flexible Payment Options
- Data Driven Marketing



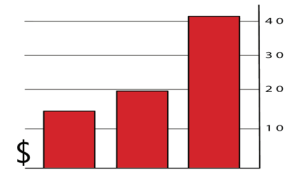
www.myleverage.com



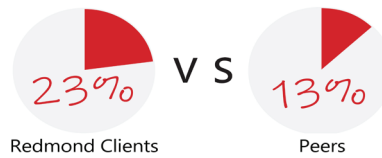
Redmond clients increased membership at twice their peer group



Redmond clients improved ROA up to 42%



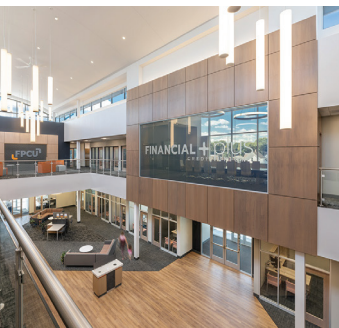
Redmond clients increased market capture at nearly twice their peer group



Redmond clients that used our Prescriptive Consumer Data Analytics have grown assets, loans and improved ROA!

The Redmond Company consulting division uses advanced data analytics, along with 46 years of financial business experience, to provide actionable insight for our clients. We calculate your most profitable member profiles and use this information to select the ideal locations for branch deployment. We also improve your profitability by using The Science of Design to exceed the wants and needs of your members.

LET REDMOND BE YOUR PARTNER



Create Loyalty and Empower Underserved Populations with Vehicle Access

Open Lending's 2023 Vehicle Accessibility Index reveals that one-quarter of non-car owners see the car buying process as unclear or confusing, and 83% said they would return to a lender for other purposes if they had a positive automotive loan experience.

How can your financial institution improve the loan experience and livelihoods for underserved populations by making auto loans more tangible for more Americans?



Visit go.openlending.com/2023vai or scan the QR code for the full report.

FOR MORE INFORMATION
Contact Ken Palmer, RVP-Sales
p: (512) 892-0400 Ext. 9303
m: (954) 644-0555
e: kpalmer@openlending.com



*League of Southeastern
Credit Unions & Affiliates*

Alabama Office:

22 Inverness Center Parkway, Suite 200
Birmingham, AL 35242

Florida Office:

3692 Coolidge Court
Tallahassee, FL 32311

Georgia Office:

2810 Premiere Parkway, Suite 150
Duluth, GA 30097